



# MORTEX<sup>®</sup>

Mineral Skin

## COLOR CHART

Technical and decorative micro-mortar  
« waxed concrete » type



# LIMITLESS POSSIBILITIES

*Colours, shades, designs, textures  
and effects - the only limitations  
are those of your imagination.*

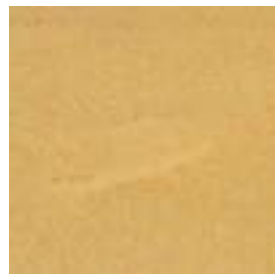




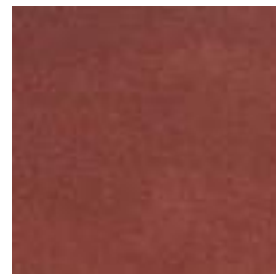
**BM01 NATURAL**



**BM05 CAFFE LATTE INTENSE**



**BM09 IMPERIAL INTENSE**



**BM13 BRICK INTENSE**



**BM02 WHITE LIGHT**



**BM06 CAFFE LATTE STRONG**



**BM10 IMPERIAL STRONG**



**BM14 BRICK STRONG**



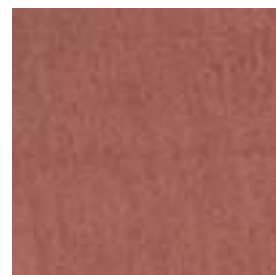
**BM03 WHITE MID**



**BM07 CAFFE LATTE MID**



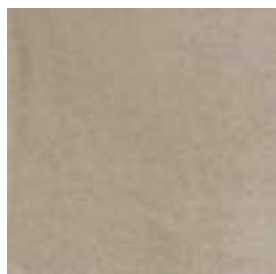
**BM11 IMPERIAL MID**



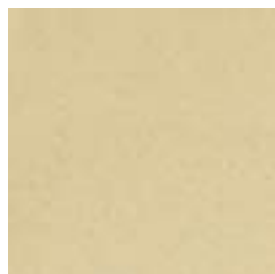
**BM15 BRICK MID**



**BM04 WHITE STRONG**



**BM08 CAFFE LATTE LIGHT**



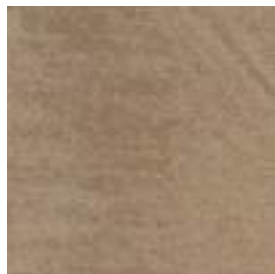
**BM12 IMPERIAL LIGHT**



**BM16 BRICK LIGHT**



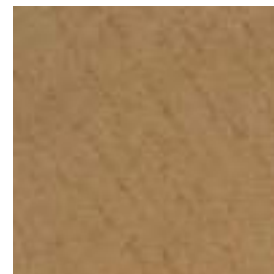
BM17 **CACAO INTENSE**



BM21 **SAND INTENSE**



BM25 **SHITAKE INTENSE**



BM29 **CAMEL INTENSE**



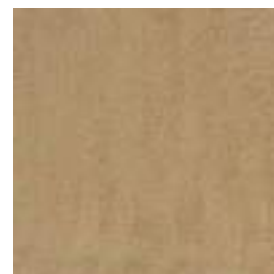
BM18 **CACAO STRONG**



BM22 **SAND STRONG**



BM26 **SHITAKE STRONG**



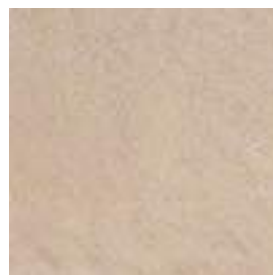
BM30 **CAMEL STRONG**



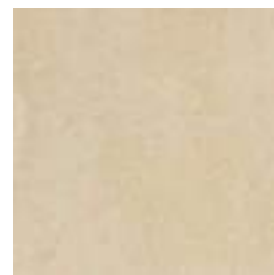
BM19 **CACAO MID**



BM23 **SAND MID**



BM27 **SHITAKE MID**



BM31 **CAMEL MID**



BM20 **CACAO LIGHT**



BM24 **SAND LIGHT**



BM28 **SHITAKE LIGHT**



BM32 **CAMEL LIGHT**



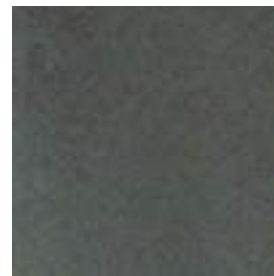
BM33 **CUBERDON INTENSE**



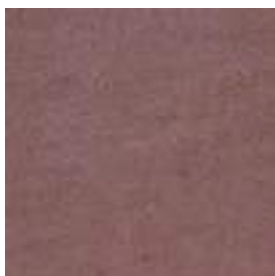
BM37 **VESUVIO INTENSE**



BM41 **OLIVE INTENSE**



BM65 **PINCTADA INTENSE**



BM34 **CUBERDON STRONG**



BM38 **VESUVIO STRONG**



BM42 **OLIVE STRONG**



BM66 **PINCTADA STRONG**



BM35 **CUBERDON MID**



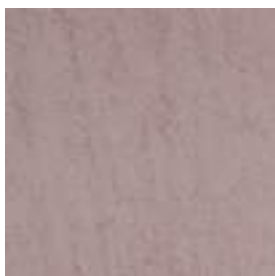
BM39 **VESUVIO MID**



BM43 **OLIVE MID**



BM67 **PINCTADA MID**



BM36 **CUBERDON LIGHT**



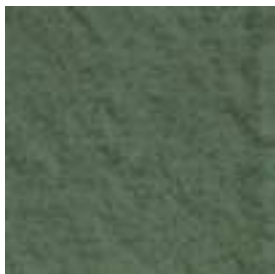
BM40 **VESUVIO LIGHT**



BM44 **OLIVE LIGHT**



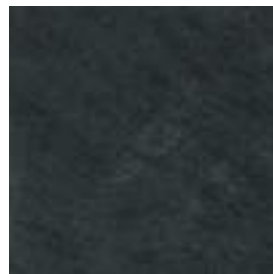
BM68 **PINCTADA LIGHT**



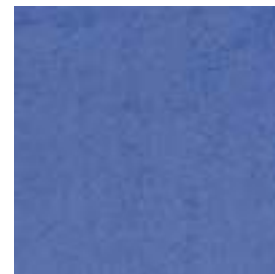
BM49 **WELSH INTENSE**



BM53 **AGUA INTENSE**



BM57 **MAKALA INTENSE**



BM61 **OLTRA MARINE INTENSE**



BM50 **WELSH STRONG**



BM54 **AGUA STRONG**



BM58 **MAKALA STRONG**



BM62 **OLTRA MARINE STRONG**



BM51 **WELSH MID**



BM55 **AGUA MID**



BM59 **MAKALA MID**



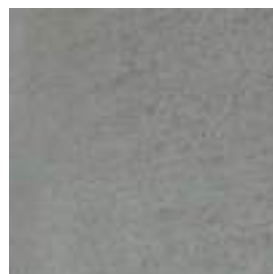
BM63 **OLTRA MARINE MID**



BM52 **WELSH LIGHT**



BM56 **AGUA LIGHT**



BM60 **MAKALA LIGHT**



BM64 **OLTRA MARINE LIGHT**

## MORTEX® SPECIAL COLORS



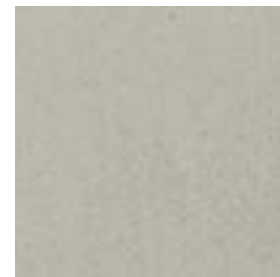
BM2020 **JEANS INTENSE**



BM2024 **SAKURA INTENSE**



BM2028 **SEQUOIA INTENSE**



BM2032 **SAGE INTENSE**



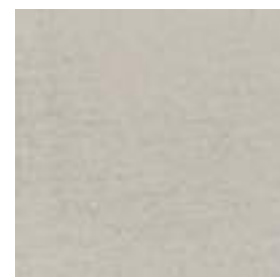
BM2021 **JEANS STRONG**



BM2025 **SAKURA STRONG**



BM2029 **SEQUOIA STRONG**



BM2033 **SAGE STRONG**



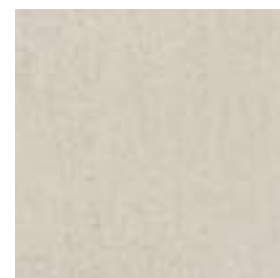
BM2022 **JEANS MID**



BM2026 **SAKURA MID**



BM2030 **SEQUOIA MID**



BM2034 **SAGE MID**



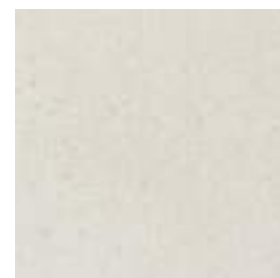
BM2023 **JEANS LIGHT**



BM2027 **SAKURA LIGHT**



BM2031 **SEQUOIA LIGHT**



BM2035 **SAGE LIGHT**





**FR** Les couleurs présentées ne sont pas contractuelles. Nous recommandons la réalisation d'un échantillon réalisé par l'applicateur du projet, accepté et signé par le promoteur du projet conscient que des effets et des nuances par rapport à l'échantillon proposé sont attendus après la mise en œuvre du produit.

**NL** De afgebeelde kleuren zijn niet contractueel vastgelegd. We raden aan een staal door de toepasser van het project te laten maken, aanvaard en ondertekend door de promotor van het project, zich ervan bewust zijnde dat effecten en nuances met betrekking tot het voorgestelde staal worden verwacht na de applicatie van het product.

**EN** The colors shown may differ from the colors of the applied product. We recommend asking the applicator of the project for a sample produced by him, accepted and signed by the project promoter, keeping in mind that different effects and nuances compared to the proposed sample are to be expected after the implementation of the product.

**ES** Los colores mostrados pueden no ser definitivos. Le recomendamos que el aplicador del proyecto haga una prueba de muestra, aceptada y firmada por el promotor del proyecto teniendo en cuenta que los efectos y los matices esperados no se reflejan en la muestra y sólo se consiguen una vez aplicado el producto.

**DE** Die abgebildeten Farben sind nicht vertraglich garantiert. Wir empfehlen, dass der Anwender des Projekts ein Muster erstellt, das durch den Promoter des Projekts genehmigt und abgezeichnet wird, wobei dieser sich dabei der Tatsache bewusst ist, dass dem vorgeschlagenen Muster entsprechende Effekte und Nuancen nach der Anwendung des Produkts erwartet werden.

**IT** I colori indicati non sono contrattualmente vincolanti. Si raccomanda di realizzare un campione ad opera del curatore del progetto, approvato e firmato dal promotore del progetto nella consapevolezza che dovranno essere previsti effetti e sfumature rispetto al campione proposto dopo la messa in opera del prodotto.

**PT** As cores apresentadas não são contratuais. Recomendamos a realização duma amostra feita pelo aplicador do projeto, aceiteada e assinada pelo promotor do projeto ciente que os efeitos e a gradação das cores em relação a amostra apresentada são esperados desde que o produto for aplicado.

**JP** これらの色は、実際の施工で実現される色とは異なる可能性があります。それぞれの現場に応じて、施工者が色、塗り模様に関する見本を作成し、施主やプロモーターから承諾を受け、施工後に見本と施工されたものとの比較確認、承認を得ることをお勧め致します。

Beal International s.a.

Z.I. Noville-les-Bois

Rue du Tronquoy 8

5380 Fernelmont - BELGIUM

T. +32 (0) 81 83 57 57 - F. +32 (0) 81 83 57 67

info@beal.be - www.beal.be

VAT : BE 0414 592 153

