

KNOW YOUR TOPCRET COATING

Baxab & Microcemento
USER'S GUIDE



TOPCRET

3	Know your coating.
6	Understand your coating.
8	Installation of your coating.
10	Care of your coating.
11	Frequently Asked Questions (FAQ's)



KNOW YOUR COATING

Topcret is the leading company in the production and application of stylish cement-based micro-coverings for floors, walls and furniture.

Our two latest products, Microcemento and Baxab, offer the best solution to the creation of seamless surfaces and can be applied without restriction to any material.



Microcemento, a practical, versatile and stylish coating.

With a thickness of only 2mm, **Microcemento** is a smooth, cement-like covering that creates exquisite continuous surfaces without the need for joints or grooves.

Microcemento can be used on vertical surfaces (walls & ceilings). It can be applied over various materials such as cement, concrete, metal, wood and ceramic or stone tiles.

It is especially suitable for refurbishment works since it allows for the renovation of existing surfaces without additional work.

Microcemento features

- Only 2mm thick
- Manually applied to create a unique finish
- Seamless
- Non toxic
- Waterproof
- Works on walls, ceilings, staircases...
- Stylish, contemporary look
- Commercial and domestic applications
- Open to foot traffic 24 hours after installation
- Over 30 different colours to choose from.

Baxab, the toughest continuous floor

Baxab is a completely new and unique coating technology. There is nothing quite like it in the market. It is an innovative product developed exclusively by Topcret, the result of over 13 years of expertise in covering technologies.

Unlike any other micro-covering in the market, **Baxab's** high resistance allows for long-term and intensive use not only in residential, but also in commercial, public areas and other places with high foot traffic.

Currently, there is no floor that is damage-proof. However, **Baxab** is the toughest, continuous floor available in the market. When we describe Baxab's strengths, we are referring to two specific features: scratch resistance and impact resistance.

Scratch resistance

Baxab guarantees a value of 120N/mm², meaning that it is more resistant than any wooden floor (including parquet), resin, micro-cement, self-levelling compound or even polished concrete. In exceptional circumstances, any floor is at risk of damage.

Impact resistance

With a value of >14,7 Nm, **Baxab** has the ability to absorb the impact of sharp objects resulting in a minimal loss of shape. This preserves the colour without splintering, unlike with marble, porcelain or ceramic tiles, where such impact would chip the material, causing a loss of colour or even breaking the surface.

Baxab features

- Only 3mm thick
- Manually applied for a unique finish
- Seamless
- Non toxic
- Scratch-resistant
- Waterproof.
- Works on floors, staircases, furniture...
- Stylish, contemporary look.
- Commercial and domestic applications.
- Open to foot traffic 24 hours after installation.
- Over 30 different colours to choose from.

KEND DIT PRODUKT

Baxab and Microcemento are manually applied coatings, products of our expert craftsmen, carried out with care.

Once completed, your coating will be unique. Every single trowel movement, every little mark or spot will make it individual. There will not be another like yours.

Hand application

All our coatings are applied in a traditional manner by our own experienced installers, using nothing more than a trowel and their own hands. They are installed one layer at a time, each with its own purpose, providing elasticity, strength, colour and resistance.

Since using heavy or large machinery is not required, our products are suitable for any type of construction work, including occupied spaces.

Imperfection? No, a unique characteristic!

As mentioned earlier, our coatings are manually applied, making all our finished surfaces different and unique. Also, due to the characteristics of our products and their manual application the result does not produce a uniform finish.

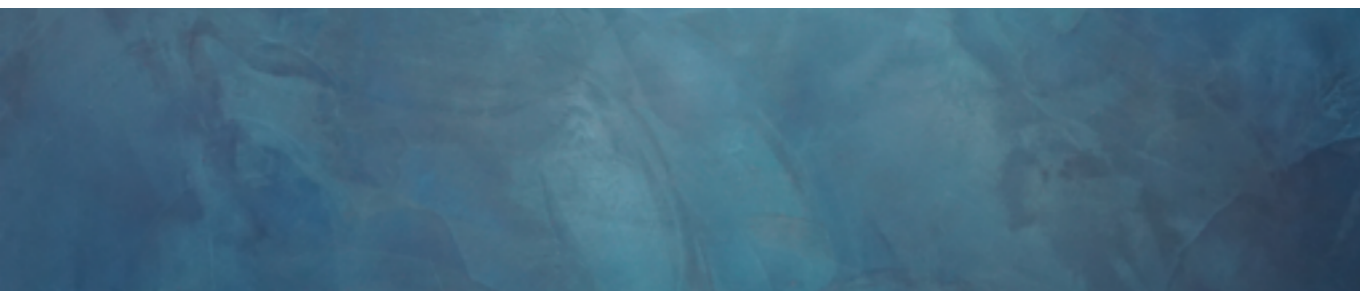
Because of its pigmentation and the way it is applied, there is a chance that some naturally-produced markings appear.

Trowel markings:

These are probably the main aesthetic feature of our surfaces. They are achieved with the trowel during the application of the colour layer. They are more prominent in Microcemento than in Baxab.

We offer two styles of trowel movement depending on your preferences (from regular to minimal with Baxab and from maximum to regular with Microcemento), but there are always some markings on our surfaces.

It is also very important to understand that it is not possible to choose the shape, tone or location of these markings.



Trowel marking in Microcemento Azul Profundo.

Sheen:

Due to the wax content in both Baxab and Microcemento, there is always a certain level of sheen in our finishes, even in the matt option if looked at closely.

Marks and spots:

They might appear here and there during the installation. Do not worry, they are part of our product's pigmentation. Think of them as something exclusive to your floor or wall. They are natural and cannot be avoided.

Unevenness on the floor:

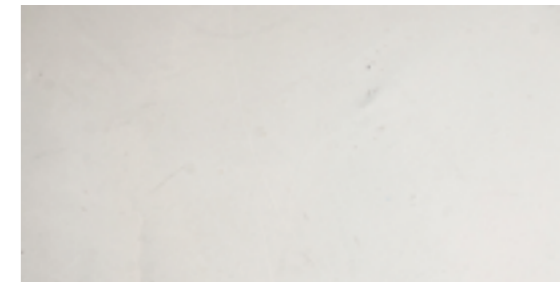
During the application, we follow the levels of the surfaces we are coating. These should be prepared prior to our installation so they are as smooth and flat as possible. Due to the minimal thickness of our products, this cannot correct already uneven surfaces.

Micro bubbles:

While very rare, these tiny little bubbles might be caused by ambient moisture and could appear at certain areas of the floor. These are not directly related to Topcret's materials, but if spotted during installation can be corrected.

Cracks:

Baxab's and Microcemento's thinness and high adhesion strength prevent cracking under most circumstances. Cracks occur only if the base undergoes some settlement motion or significant dilatation. That is why before every project, our installers inspect the surfaces to be coated. If they see any cracks, they will work on them to prevent them from opening up. However, we cannot anticipate future cracks in sub-bases, and, if they appear, there is a chance that they may affect our product.



Marks and spots in Baxab Blanco.



Watermark in Baxab Trigo.



Textured detail in Microcemento Rojo.



Detail of the hand-made corners.

INSTALLATION OF YOUR COATING

The most important part of your project with Topcret is about to start. In order to achieve an optimal result, these matters should be taken into account.

Preparation of the areas to coat

Whilst our product is very resistant and quite flexible, certain conditions have to be met for each type of substrate to ensure it is suitable for our products.

We have data sheets with indications and/or suggestions for the preparation of most substrates, which would be enough for any builder.

Please do not hesitate to get in touch with our Commercial Department or with our Project Coordinator if you need advice.

INSTALLATION PROCESS: STEP BY STEP

- 1** **Setting up the working area**
The first thing our installers will do upon arriving at the site will be to set up a working area. This area will be used to store materials and prepare the mixes. It should therefore be situated as close as possible to the surfaces to be coated, but never placed directly on them. Please expect to provide some suitable space.
- 2** **Site inspection**
Before commencement of the work, our installers will carry out a site inspection to check all surfaces (but not their stability) and ensure they fulfil the conditions required for the installation of our product. They will also take note of anything that might somehow affect the installation process.
- 3** **Site protection**
The next step is to protect the surfaces adjacent to the ones to be worked on. Plastic sheets will be used to cover units and a special masking tape applied to skirting boards or plinths. We recommend painting and/or fitting skirting boards after the installation.
- 4** **Installation**
The time needed for installation depends mostly on the number of square metres to be coated. One easy way to calculate how long a job would take is to consider 10m²/day per installer. However, there are certain conditions that might change this, such as ambient temperature, house insulation, condition of the surfaces, draughts, etc ...
Please be aware that even if our installers are very careful and work cleanly, the installation will produce dust and some odour during some of the stages. Also, bear in mind that every coat has an effect on the finish, so the final look of your surface will not appear until the last coat has been applied.
- 5** **Protection removal**
Once the last coat is completed, our installers will remove all the protective coverings from the site and examine the finished areas. Before leaving the site, they will clean up and confirm the measurements of the areas they have coated.
- 6** **Customer approval.**
After the installation has been completed, we will kindly ask you to inspect the premises with one of our operatives so that we can ensure complete satisfaction. Once this is done, please make sure to sign and retain a copy of your job completion form.



CARE FOR YOUR COATING

You finally have your new coating installed. Great! But ... What's next?

How long does it take to dry? What can you do to take care of it?

Which products can you use to clean it?

Below you will find all you need to ensure that your Topcret coating lasts for many years.

Baxab & Microcemento drying times

In addition to rapid installation, one of the greatest advantages of our products is that the coated surface can be open for foot traffic 24 hours after the work has been completed. However, in order to avoid any unnecessary damage, we recommend keeping to the following drying times:

-24 hours: light foot traffic permitted.

-72 hours: the sealant dries; the surface becomes waterproof.

You can now cover your floor with a breathable material (we recommend MDF panels), removing it at night so the floor can keep curing.

-5 days: you can now reposition your furniture or units with new, clean felt pads in order to prevent unnecessary damage.

-21 days: the surface completely cures.

How long does a Topcret coating last?

It is hard to say since it mostly depends on the amount of use and maintenance of the surface. If you take good care of it, it will last for many years.

How do I clean it?

No heavy machinery is required for the maintenance of our surfaces.

Baxab only needs simple periodic cleaning, removing the dirt particles to protect the colour. You should mop the surface 2/3 times per week with water and self-shine wax, or once a day if the floor is exposed to heavy traffic.

Walls or vertical surfaces treated with Microcemento require much less maintenance. You can easily clean them with cleaning sprays for furniture or neutral soap mixed with water

Which products can I use to clean it?

RECOMMENDED	DO NOT USE
BAXAB	BAXAB
-MR MUSCLE NEUTRAL PH (LIQUID SOAP)	-VIAKAL (LIMESCALE REMOVER).
-SELF-SHINE WAX.	-MOST CHEMICALS AND SOLVENTS (MAX. 10°)
-ALCOHOL.	
-CILIT BANG.	
-BLEACH.	
MICROCEMENTO	MICROCEMENTO
-MR CLEAN NEUTRAL PH (CLEANING SOLUTION).	-VIAKAL (LIMESCALE REMOVER).
-SELF-SHINE WAX (DILUTED WITH WATER).	-MOST CHEMICALS AND SOLVENTS (MAX. 10°).
-PRONTO (FURNITURE SPRAY).	-HYDROCHLORIC ACID-BASED PRODUCTS.
-BLEACH.	-CILIT BANG (STRONG CLEANER).
-DISHWASHER DETERGENT.	
-ALCOHOL.	

Regenerating System

To deal with extreme dirt or abrasion, we can supply a Regenerating System Programme that can be used on your surface. It consists of removing the last layer and replacing it with a new one, leaving floors or walls as they were before.

Guarantee & Insurance Programme

Topcret offers a free 3 year Guarantee & Insurance Programme with the installation of any of its products. It covers, for a period of three years, the repair of any defects emerging as a result of faulty installation or any problem inherent in the product. It also offers substantial discounts for repairs made necessary for other reasons, including changes of colour.

Please refer to the Guarantee & Insurance Programme leaflet for further information.

Do not hesitate to ask for it at: london@topcret.com

FREQUENTLY ASKED QUESTIONS (FAQS)

Do you sell your products without installation?

No, we do not. At Topcret we manufacture and install our own products, but we do not sell the material alone. Our installations require a profound knowledge of the products and great skill!

Do you have a minimum area requirement to undertake a project? Yes; that would be a total of 20 sq m per job.

I live outside London but I like your product ... Can you install in any part of the UK?

Yes, from our base in London we cover the whole of the UK. If the job is located outside London, there will be a charge to cover the travel & subsistence expenses of our installers for the duration of the installation.

Does it work well with underfloor heating?

Perfectly. In fact, most of the installations we carry out in the UK are over underfloor heating systems topped with screed or self-levelling.

Do you have a showroom I can visit?

Yes, we have a showroom in London with a complete installation of our products on multiple surfaces and in different colours. We always recommend visiting us to have a good look at our products. Find where we are located at www.topcret.co.uk

Can you send me some samples of your products?

Yes, we can do that, but again, we definitely recommend visiting our showroom, since the samples will only show the colour options. They will not demonstrate the aesthetic features and quality of our products in an actual installation, nor the trowel marks of the finish.

Are Topcret products waterproof? Yes, our coatings are waterproof. We can install them in wet rooms, shower areas, spas, steam and sauna rooms. We can even coat swimming pools. However, 'waterproof' is not the same as 'waterproofing'. Our products are impermeable on their external face only, but not from what is under-

neath. Any wet areas to be coated will therefore need to be tanked before a Topcret installation.

Can it be used outdoors? Yes, our products are perfectly suitable for outdoor use. However, we need dry weather during the installation with an additional 72 hours for the sealant to dry. But do not worry! We have done many patios in the UK. It is just a matter of planning the right time for the installation. This is why we recommend doing outdoor jobs during the warmer months of the year.

Is it completely anti-scratch? Can I do as 'the lady with the knife' in the advertisement? Baxab, our flooring product, is very resistant to scratches, even metallic ones, but a sharp knife would scratch almost any type of floor. An ad is an ad, and its purpose is to send out a message, sometimes using a bit of fiction!

What preparations do the surfaces to be coated require? Consider us as painters. Although our product and its installation is far more complex than painting, we are a finish, a very thin one. As with a paint finish we follow the shape and unevenness of the surface we work on. So, our ideal surface would be a solid, dry and levelled/smooth one. Screed, self-levelling compounds, tiles, plasterboards, cement boards or even wood usually work well ... Our commercial department will provide you with additional advice on the preparation of the surfaces to coat.

It looks like polished concrete. How is it different from this product? While it looks quite similar, polished concrete is considerably thicker and it also cracks and chips quite easily compared to our products, which are stronger and will last longer.

How easy is it to touch-up cracks or impact marks? This depends on the extent of the damage. The bigger the patch or touch-up, the more it will show. The repaired area might show a difference in colour to the rest of the area. If any repairs should be required, Topcret representatives will be happy to assist.

Topcret®

www.topcret.com

Copyright © Topcret S.L., 2016

Design & layout /

Gorricho / Estudio de Diseño®

www.gorricho.com.ar

Printed at /

December 2016. Barcelona. Spain.

All the images on this publication are property of Topcret® S.L. Any reproduction, digital or printed, of this images is expressly forbidden. Topcret, Microcemento, Baxab® logos and all its products are property of Topcret® S.L. The "Desire is Topcret" slogan is property of Topcret® S.L.

info@topcret.com
www.topcret.co.uk

